



Wholesale Market

GEA

High-quality Ethernet connectivity



Level 2 Ethernet connectivity from the End Customer's premises to the point of delivery to the Operator's Network.

Service features

Coverage	Delivery SLAs	Assurance SLAs
Italy 100%	Solar Days 40 days	Solar hours on Basic Profile 5/8 h

Who are they for?

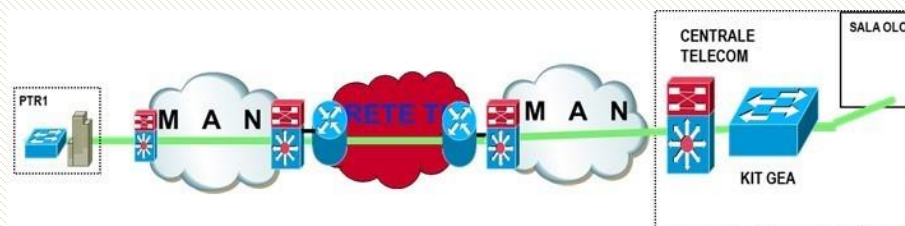
The Offer is aimed at all Operators active in the High-end Business market.

Service description

The GEA service consists of Level 2 Ethernet connectivity from the End Customer's premises to the point of delivery to the Operator's Network.

It is a service that targets the high end of the Business market.

Connectivity is achieved through an S-VLAN that runs from the end customer's premises (PTR site) to the point of delivery to the Operator's network (KIT GEA site).



The SVLAN provided by TIM is transparent for the Operator's Ethernet traffic.

Profiles with different Classes of Service (CoS) are available:

- CoS 2
- CoS 3
- CoS 5

The contractual terms for the rental of the GEA circuit are:

- 1 year
- 2 years
- 3 years

On request, durations can be extended to more than three years.

The GEA offer includes the following connectivity services:

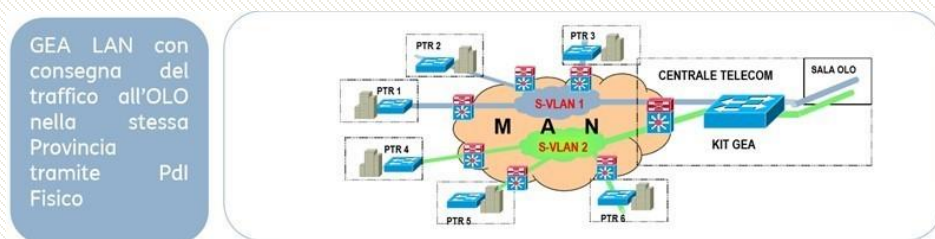
- GEA LAN
- GEA Line
- GEA MEF Evoluto

The **GEA MEF evoluto** service is the latest, best performing and richest portfolio.

GEA LAN

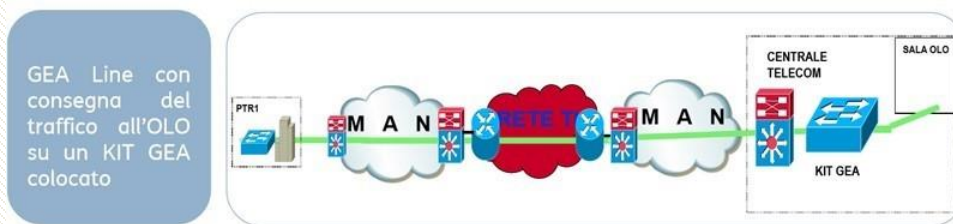
It offers connectivity between all the PTRs (end customer site) related to it. Traffic from customer sites can be delivered to the Operator in the same Province (via a Physical Pol) or in another Province (via a Virtual Pol).

A GEA LAN link creates an S-VLAN that joins all the PTRs belonging to it.



GEA Line

It is a point-to-point geographical connection between the PTR (end customer site) and the OLO KIT.



GEA MEF EVOLUTO

These are Point-to-Point connections made exclusively on the OPM Network.

It adds the following features to the GEA service:

- Profiles with CoS 3 and CoS 5 and no longer just CoS 2;
- New Assurance SLAs challenging and improving on the standard GEA;
- Increased Annual Service Availability.

Profile names :

- GEA MEF Evoluto with COS 2: GEA MEF EVO 2
- GEA MEF Evoluto with COS 3: GEA MEF EVO 3
- GEA MEF Evoluto with COS 5: GEA MEF EVO 5
- GEA MEF MultiCoS (type A, B or C)

The table shows the available 'GEA MEF Evoluto' profiles.

Profilo/Velocità	5M	10 M	20 M	30 M	60 M	100 M	200 M	300 M	>300 M
GEA MEF EVO 2	-	X	X	X	X	X	X	X	X
GEA MEF EVO 3	-	X	X	X	X	X	X	X	O
GEA MEF EVO 5	X	X	X	X	X	X	-	-	-

Key: X = Profile Available
 O = Only on Project Basis and subject to Feasibility Study
 - = Profile not available

Access modes available for the customer site: Basic, Plus, Ultra.

Prices

The price is given on a List basis.

Regulatory conditions

The service is aimed exclusively at:

- Operators with an individual license or a general authorisation for telephone networks and services for public use which existed before the entry into force of Italian Legislative Decree no. 259 of 1 August, 2003, containing the 'Electronic Communications Code' (referred to in Article 38 of the Code), as last amended by Italian Legislative Decree no. 259 of 28 May, 2012. 70.
- Companies with a general authorisation for electronic communications networks and services pursuant to Art. 25 of the above-mentioned Italian Legislative Decree no. 259/2003, as last amended by Italian Legislative Decree no. 70 of 28 May 2012 70.





Wholesale Market

TIM SPA

Registered Office: Via Gaetano Negri, n.1 - 20123 Milano
Sub-Office and General Management: Corso d'Italia, n. 41 - 00198 Roma
Certified email box (PEC): telecomitalia@pec.telecomitalia.it

Tax Code/VAT no. and Milan Company Register no.: 00488410010
Entry in the Register of Producers of Electrical and Electronic
Equipment (AEE) IT080200000799
Share Capital €11,677,002,855.10 fully paid-up